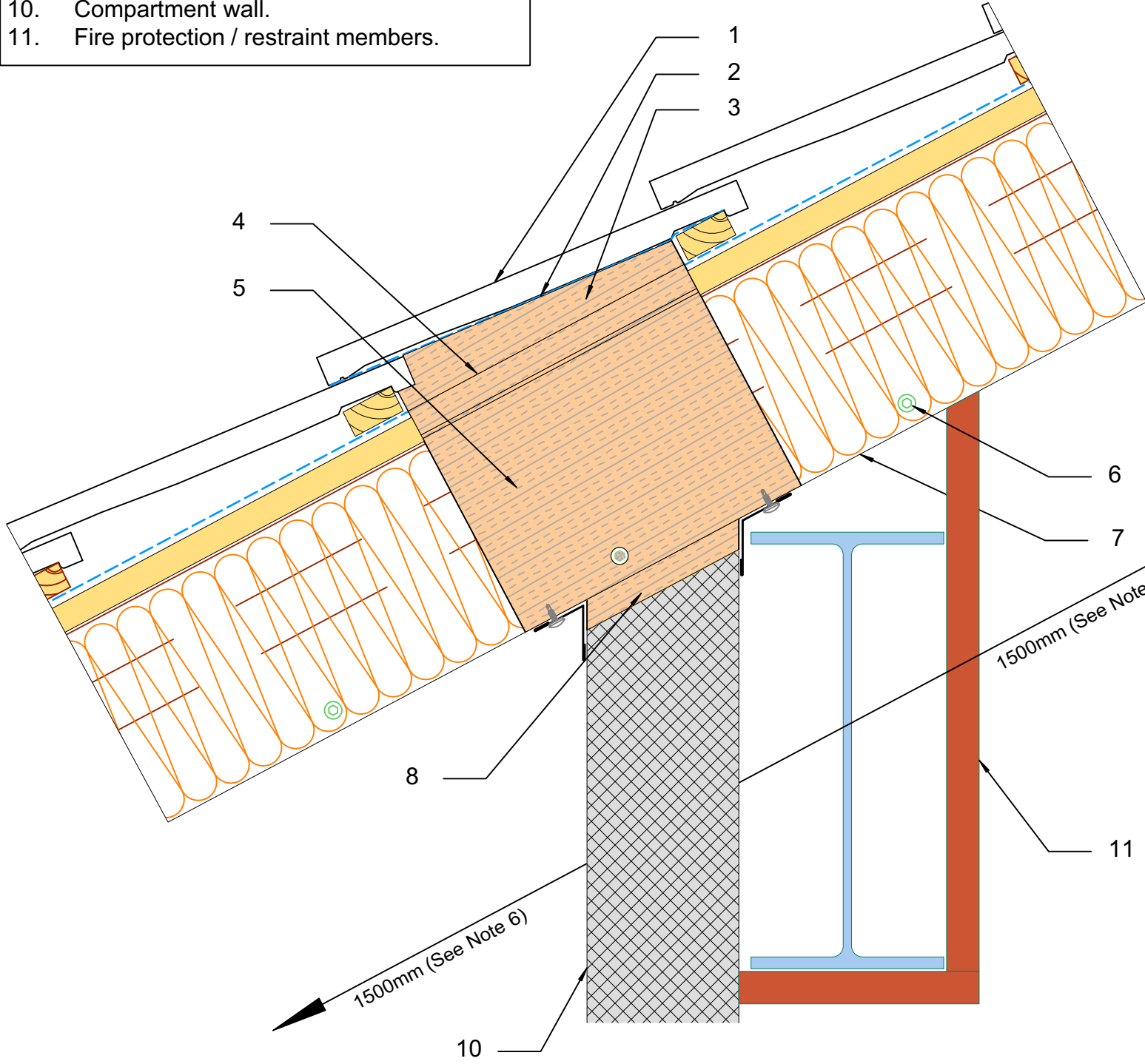
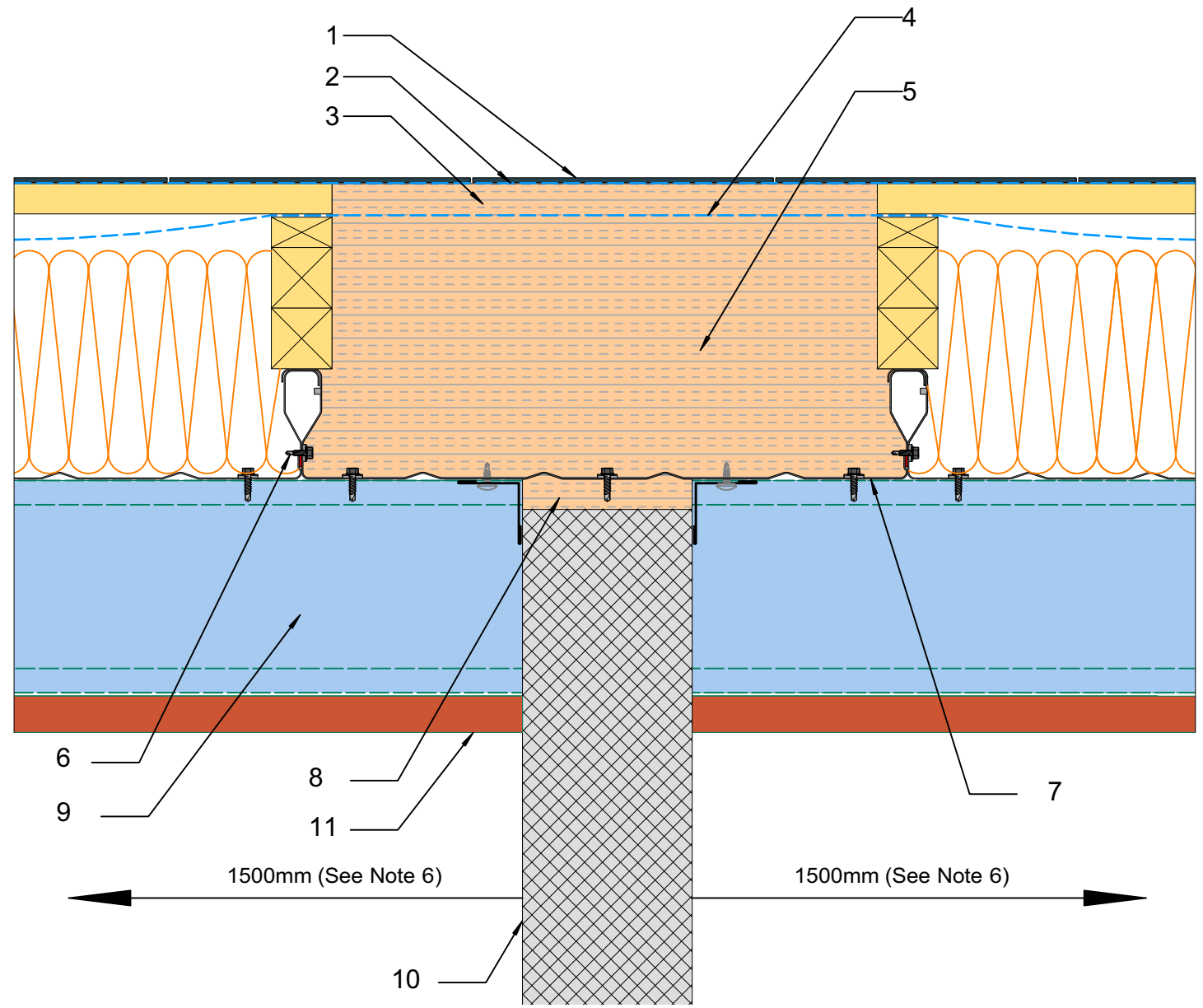


1. Slate / tile roof covering designated AA, AB or AC to BS476 Part 3.
2. Strip of breather membrane.
3. Rockwool insulation packed to underside of roof covering.
4. Main breather membrane.
5. Rockwool insulation.
6. Steel rivets or stitcher screws @ 300mm cr/s to all side flanges within 1500mm either side of compartment wall.
7. TacTray 90.
8. Rockwool fire stopping packed between top of compartment wall and underside of TacTray.
9. Purlins continuous over compartment wall.
10. Compartment wall.
11. Fire protection / restraint members.



**Wall Normal to TacTray 90**



**Wall Parallel to TacTray 90**

Typical Construction Details for  
U Value 0.18 W/m<sup>2</sup>K

Reference:- WFRC C80614

**BRITMET**  
LIGHTWEIGHT ROOFING  
TacTray 90

Britmet Lightweight Roofing  
Kingfisher House  
Unit 17  
Overthorpe Road  
Banbury  
OX16 4SX  
Tel: 01295 250998  
Fax: 01295 271068  
email sales@britmet.co.uk  
www.britmet.co.uk

Drawn BTD	Date 11/12/19	Scale Do Not Scale
--------------	------------------	-----------------------

Revisions

--	--	--

Title  
Britmet Lightweight Roofing  
TacTray 90 - Compartment Wall Interface

**U Value 0.18 W/m<sup>2</sup>K.**

**DRG No.**

**TF/TT90/550**